



RetailViVA

**Flexible, Reliable,
Powerful Cloud Retail ERP**

erp@sathguru.com
www.retailviva.com
+91 72072 08109



About Us

Retail ViVA is an enterprise-class 20 module integrated Retail ERP solution designed as a single solution approach to modern retailers. Retail ViVA offers a scalable and flexible Retail Management System designed to help retailers make faster decisions, increase margins, improve customer experience, and gives a critical edge over others. Retail ViVA is a unique and Artificial Intelligence (AI) powered Enterprise Resource Planning (ERP) suite that covers the entire gamut of the Retail process from Store to Head Office. Further, nine native tools are integrated with Retail ViVA to gain retail enterprise-wide efficiency with a collaborative approach to business growth. Retail ViVA is an end-to-end Retail Management Solution with unified commerce and Omni-Channel capabilities. With proven customers across continents for over a decade, Retail ViVA is proven and scalable Retail ERP that has matured over perpetual integration of innovative ideas



Procurement



Retail ViVA's Procurement Module is built to streamline procurement decisions for buying teams to do smart sourcing from domestic and international vendors, agents, and partners. Retail ViVA captures all costs to arrive at accurate landed costs, which is an important ingredient for customer pricing strategy. Integrated with Retail ViVA's Open-to-Buy tool, the Procurement Module provides the best decision support system for buying teams to make well-informed decisions, keeping inventory movement, customer off-take, and vendor supply lead times. Retail ViVA's Procurement Module is designed to foster long term partnerships with Vendors and drive sourcing as a strategic process to gain optimum value at both ends with the ultimate aim of providing the best value to end customers. The Procure-to-Pay processes are widely covered integrated with other modules including auto-posting to General Ledger and Sub Ledgers.

Inventory



Our Inventory module updates stocks in real-time and displays available stock, for sale, including reservation of stocks that are committed for delivery. Users can plan inventory using Open-to-Buy budgeting tools and monitor for normal and abnormal movement in inventories. Integration with merchandising and procurement module, our Inventory module gives a 360-degree view of inventory planning like allocation, transfer, and replenishment. With an integrated environment, Retailers can optimize inventory holding costs across locations and adopt smart sourcing to time

Our solution assists our clients in determining whether they have the right level of inventories and their whereabouts i.e. in-store, in transit, in receiving, and so on. Retail ViVA's Inventory Management module seamlessly optimizes store operations to support accurate and real-time inventory.

Merchandising



Merchandising module enables Retailers to reduce the time and efforts it takes them to perform crucial day-to-day merchandising activities from new product introduction to automated replenishment. To manage the Retail lifecycle from planning or buying or receiving through transferring or distributing or selling of goods to perform analysis or revised pricing and then back to planning for the next season, a Real-time Merchandising module for Omnichannel retailers is the need of the hour.

The Seamlessly Integrated Merchandising module of Retail ViVA allows multi-store Retailers to leverage best merchandising practices on customer-centric pricing, goods, replenishment & availability. Retail ViVA's advanced Merchandising module handles matured operations like store planning, auto-replenishment to stores, range planning, auto distribution of shipping's received, a seasonal adjustment to stock movements, and analyzing fast & slow-moving stock items. Merchandising module in Retail ERP are great decision support systems and Retail ViVA's Merchandising Module goes beyond to automate distribution based on past patterns.

Point of Sale (POS)



With rich functionality, Retail ViVA's Point of Sale (POS) module gives flexibility for Retailers to configure various types of Retail sales with ease and comfort and operate a superior Retail ERP product. Customer service agents can provide personalized service and delight customers with a better experience.

An effective POS module with fully integrated functionalities in Retail ERP will go a long way in ensuring the smooth running of all of the Retail business operations.

E Commerce and M Commerce



Omnichannel has been a buzzword for the last several years. It represents a strategy Retail businesses are taking to connect the multiple, siloed sales channels they may have and fuse them into one. Further, it is designed to provide a cohesive and consistent experience across the brand to meet the expectations of online shoppers demand. Advanced techniques minimize the time and effort invested in developing and maintaining e-commerce and m-commerce offerings. We have now moved on from Omnichannel to Unified Commerce as the next stage of innovation.

With our e-commerce and m-commerce integrated modules, you can start your online business immediately and accept credit card payments online. By inherent design of full back-end integration, the storefront gets populated automatically, be it mobile or e-commerce right from ERP. Retailers can use their existing domain, get a white-labeled mobile APP of their choice, and run it with all brand visibility. With the convenience of choosing and switching between in-store, mobile and, web, customers get ample opportunities to act and re-act, and Retailers get ample choices to be on the minds of their customers. It is a win-win for both.

Finance



Retail ViVA's integrated Finance and Accounting (F&A) Module enables Retail leaders to thoroughly understand their cash inflow and outflow better, transform and streamline their processes and operations across all their stores. With real-time visibility into the financial performance of the Retail business from a consolidated level down to the individual transactions, Retail ViVA's F&A Module facilitates trading reports, category performance measurements, gross profit analysis, profit tracking, reporting, spend analysis and regulatory compliances of publishing financial statements at periodic intervals. Further, it aids in decision making, scenario generation, what-if analysis, competitive benchmarking, growth tracking, and purpose achievements. Further, it also helps to consolidate various subsidiaries to look at a group performance as a single company, as if there are no subsidiaries involved.

Human Capital Management (HCM)



Our Human Capital Management (HCM) module takes care of every aspect of Retail Workforce Management and designed for paperless digital experience. With integrated e-signature, flexible creation of survey on the fly, and self-service document design, we empower users to be dynamic to quickly reorient for changing needs. As much as a Retail employer wants employees to impress customers, Retail ViVA's Human Capital Management (HCM) module handles end-to-end Retail Workforce Management so that internal customers i.e., employees get impressed and thus motivated to impress customers.

Payroll



Retail ViVA's Payroll Management Solution offers a seamless Payroll process, automating the management of employees' salaries, wages, bonuses, and deductions. All functions from hiring an employee to its final termination in the organization; various sub-components such as Personnel management, organizational management, and time management is fully integrated to meet all essential business needs. Our solution offers online access to payroll information, so employee labor costs can be tracked and monitored which is often one of the highest expense of a Retailer. Our Payroll totally integrates with General Ledger, Sub Ledger allows standardization and cutting down the time involved in various manual processes and increasing operational efficiency.

Customer Relationship Management (CRM)



With Retail ViVA's Customer Relationship Management (CRM) module, you get a flexible CRM solution that is self- customizable to suit current and emerging business requirements. Using CRM, you can track Lead to conversion life cycle with ease and convenience and grow your business.

CRM module also integrates data from other relevant modules giving the integration efficiency and seamless access of data across Retail ViVA. Our CRM module is built 100% on our own NoCode platform, giving absolute flexibility for users to make their own changes.

Campaign Management



Retail ViVA's Campaign Management module allows to organize, measure, and control the effectiveness of market promotions. Plan or schedule Campaigns weekly or periodically, customize the Campaign templates, track your Campaign by recording details such as Budget, Actual Cost, Expected Revenue, duration, and many more. You can also run reports to know the Return on Investment (ROI), highest revenue campaigns, and so on.

The Campaign can be focused on a specific target segment, and blasted through multi-communication channels. Analytics and feedback loop helps to reorganize future campaigns for better ROI.

Environment, Health and Safety Module (EHS)



EHS excellence, especially in the Retail industry requires a unified and modern software that can evolve as quickly as the Retailers tend to meet changing dynamic conditions in the regulatory environment and the broader marketplace. With all the regulations across large geographic footprints, retailers face a daunting challenge to not only track and meet compliance requirements but also to drive improved performance.

Retail ViVA's fully integrated, suite of feature-rich EHS Management module covers the full cycle of the EHS needs of the Retail industry. With Customizable forms and workflows, as well as flexible data relationships, and ample opportunities to customize using Retail ViVA's NoCode platform, the Retailers need not look any further to comprehensively take care of their EHS needs. EHS managers can perform trend analytics to improve performance and increase stakeholder confidence on a continuous basis.

Embedded Self Service Reporting & Analytics



With Retail ViVA's intelligent and Embedded Self Service Reporting & Analytics module, Retail users can perform queries and create actionable insights in the form of interactive Dashboards and Reports on the fly without any IT support. Retail ViVA's infogrid views can be accessed in our Embedded Self Service Reporting & Analytics module with cascaded security rights and charts/graphs/ Adhoc reports can be prepared within minutes for comprehension and analysis. These insightful charts are integrated with our Tetra collaboration tool for creating collaborative discussion within minutes and collective wisdom applied before a concrete decision is made. Our Embedded self service Reporting & Analytics is our own tool natively embedded into Retail ViVA thus giving unmatched data access subject to data security rights configured in our Retail ERP. Retail ViVA empowers users without dependence on IT or anyone else and is a true self service Business Intelligence tool.

Enterprise Content Management (ECM)



Modern Retailers are empowered by ECM Software to more efficiently track documents, distribute and retrieve reports, comply with industry regulations, enhance customer service quality and efficiency, manage the vendor contract approval/amendment process, and much more. Further, their multi-geographical spread, and organization structure of Central Management and decentralized store operations makes it obligatory for them to manage the enterprise content centrally for achieving access efficiency.

Retail ViVA's ECM Module is central to all other modules and all digital content from other modules is automatically stored in ECM Module with a password and governance access. Further, content access is granted as per governance rules. Retail ViVA also smartly tags content with taxonomy for easy search, making content accessible from anywhere and everywhere. Rule-based content movement from active to archive to deletion can be configured by users. Retail ViVA's ECM Integration across is par excellence, unifying content management processes across the Retail Enterprise for blissful employee experience, and efficient retrieval.

Governance Risk and Compliance (GRC)



Retail ViVA's GRC module has come a long way by integrating the various diverse modules of risk, compliance, and governance to provide a holistic view of risks across the Retail enterprise. Our GRC module helps to consolidate governance policies, procedures, and action points into one repository, with straight linkage to Enterprise Content Management for storage. With versioning and workflow approvals, our GRC module echoes accountability right by its design, which is the cornerstone of the GRC process.

Retail ViVA's GRC module addresses the issues of corporate governance, enterprise risk management, and effective corporate compliance with timely reporting and feedback loop for continuous improvement.

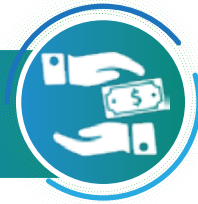
Offline POS



Retail ViVA's Offline Point of Sale functionality, is a business continuity solution at the edge point of stores to function normally when connectivity to server or internet breaks down. Data syncs two-way from the server so that when you are offline, you have all the data, perform POS functionality normally including offering currently running promotions, schemes, and discounts to customers.

Retail ViVA's integrated offline POS functionality comes with a seamless switch over between online POS and offline POS in case of server/internet downtime. All sales data is automatically synced once normalcy is restored. You are always ready to serve customers at stores, irrespective of downtime of critical IT infrastructure.

Ready Finance



Ready Finance (RF) is the provision of consumer credit at the point of purchase/-checkout. Rather than leaving the customer to seek external finance, or make use of a credit card, you can incorporate a credit administration system into the customer journey. The need of the hour is the RF functionality which is scalable, fast, flexible, and agile. Retail ViVA's Ready Finance module is a fit-for-purpose, integrated suite enabling Retailers to implement "buy now, pay later" options to their Customers.

Ready Finance



With the integrated Ready Finance module, Retailers automate Credit reviews through Credit Management workflow process and implement credit decisions based on the collected credit data of Business-to-Business (B2B), Business-to-Consumer (B2C) and prospects with our standardized system. All the activities like initial credit review requests and creation of the credit application, credit scoring, and analysis, to the final implementation of credit decisions, are covered in our credit assessments. Retail ViVA's Ready Finance module covers end-to-end credit cycle management right from prospecting to closure and monitoring. The module uses cutting edge technology including e-signature and is designed to operate in a paperless mode.

Roster



Make the complex Roster problems easy with Retail ViVA's Roster module that comes with the most flexible and configurable features. Roster integration with Time and Attendance makes it easy for viewing, scheduling, and tracking workforce schedules. Our calendar feature in the Roster entry form gives you insights on resource availability based on various categories. Retail ViVA's Roster management module let go off the administrative burden Retailers has to face so that they can focus more on growing their Retail store.

Service Contract and Warranty Management



Retail ViVA's Service Contract and Warranty Management module is designed on the fundamentals of enhancing Retailer's profile in the era of the experience economy and, more particularly, enhancing it even in the difficult situation of handling a customer when a product is not functioning to her/his expectations. The sensitivity of warranty service, the fastest turnaround, and visibility of pathway to closure were kept in mind while designing the module. Further, the experience of handling over 1 million service requests in our module has proven the way to perfection of this delicate system. With our Service Contract and Warranty Management module in place, Retailers can get the edge over the competition by creating a better experience economy to their customers and handle this delicate service management in a confident manner. The module covers entire life-cycle from service request creation until delivery and feedback management from customers.

Stock Take



Retail ViVA's integrated and on-demand Stock Take module is designed for modern retailers to perform stock counts without any business interruption even during business hours. The Stock count can be compared with system stock online and recount can be continued to double-check without loss of time. This improves in arriving at correct count variance and immediate disposal of count differences right until accounting. Ever ready to perform stock count, and without needing to download item masters, our stock take module makes it easy to perform count and close stock take at the quickest possible time.

Time and Attendance



Retail ViVA's comprehensive Time and Attendance Management solution is flexible, easy-to-use, and feature-rich. Late and Early clock in/out times with automatic notifications to reporting manager / HR manager, submission of time off requests, and more is all just one click. With an intuitive user interface, Retailers can eliminate manual time recording and errors. Further, integration with workforce roster module, Time and Attendance management solution works to its best, without needing to do any manual adjustment or corrections for attendance processing

Retail ViVA's Time & Attendance module makes it easy to record attendance and get insights and view on the team's daily/weekly/monthly attendance and work location based on rostered timing.

Tools

Sathguru's innovative and best in class Tools are easy-to-use applications and interfaces, seamlessly integrated across all of our Enterprise Software Products enabling easy and uniform flow of information under defined controls.



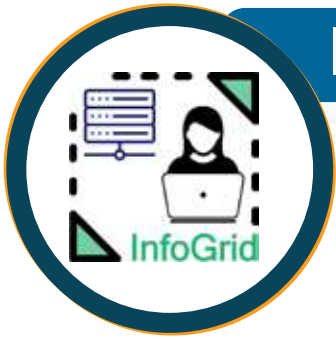
DRONA

With Sathguru's Drona, a unique NoCode, Chat-Bot Training Platform, the process of training Tulsi, Sathguru's Artificial Intelligence (AI) Powered Chatbot is simplified with some real game-changing features, Citizen Users can train Tulsi Chatbot using Drona tool without any Information Technology (IT) knowledge or dependence. Drona's training process involves a simple six-step process of selecting what users see on the screen or what users configure as views or what user's prepared as charts. When Drona is provided with a data set by users, it creates the necessary entries in the Tulsi's knowledge graph so that the statement inputs and responses are correctly represented.



Tetra

Tetra is an integrated collaboration tool that auto-creates groups and facilitates threaded chat and messaging between group members facilitating decision-making. Tetra can be used for multi-purpose to drive business as well as team engagement. Tetra's easy to use user interface makes collaboration easy and brings in efficiency and improves performance in an overall manner



InfoGrid

Retail ViVA's InfoGrid is a data mart in which users can view and visualize their data by themselves without any IT dependence. InfoGrid is fully self-service driven with a simple move or drag commands allowing every user to feel comfortable using the system and achieve their information needs. Further, data can be exported to excel in seconds subject to user permissions



RIGA

RIGA from Sathguru is a next-generation, powerful yet enterprise Robotic Process Automation (RPA) tool, indispensable for automating the various repetitive back-office processes.

RIGA is integrated right from the time an invoice or document is scanned or dropped into the drop zone, extracting relevant information from those documents into meaningful screen inputs for approval through workflows, completely avoiding transaction entries by users into our ERP products



SART360

SART360 is an embedded ad hoc reporting tool that allows normal users to prepare their own reports in minutes without dependence on IT users. Users can not only prepare different types of reports but can also schedule them to distribute at pre-determined time intervals. Users can also export pivot report to excel with formula inbuilt to manipulate further in excel



CryptoESIGN

CryptoESIGN enables users to electronically sign documents anytime, anywhere & on any device, secured with Blockchain integration



Simvey

Retail ViVA's Simvey is an end-end integrated, real-time Survey tool used for doing online surveys for better understanding the consumer behavior.



Tulsi

Retail ViVA's Tulsi, is an integrated AI chatbot that brings up real-time information on-demand from the Retail ViVA database when Retailers ask questions in the natural English language. Tulsi is AI-powered, Retail ViVA design trained, and is conscious of user rights and security. Tulsi is integrated into Retail ERP software.



DocInDesign

Sathguru's DocInDesign, a versatile and powerful document editing tool integrated with back-end ERP, allows the end-users themselves to design, build, and modify documents or business form layouts exactly as required by the organization. Through Sathguru's DocInDesign, users are equipped to create quick and easy to create customized documents with simple drag-and-drop functionality, like Invoice, Payslips, etc. of any document design type with customized rich fonts selection, text formatting, headers, page breaks, placement of labels, data, spaces, margins, images, and text insert, etc.

Retail ViVA with integration of 20 modules and 9 tools is designed as a single solution approach to cover entire gamut of Retail operations allowing Retailers to focus on their core business operations. Call us for a demo today

Contact Us

Sathguru Software Products Pvt Ltd

Plot 54, Sagar Society, Road No.2,
Banjara Hills, Hyderabad - 500034

Tel: +91 72072 08109

E-mail: erp@sathguru.com

www.retailviva.com

Connect us on

